

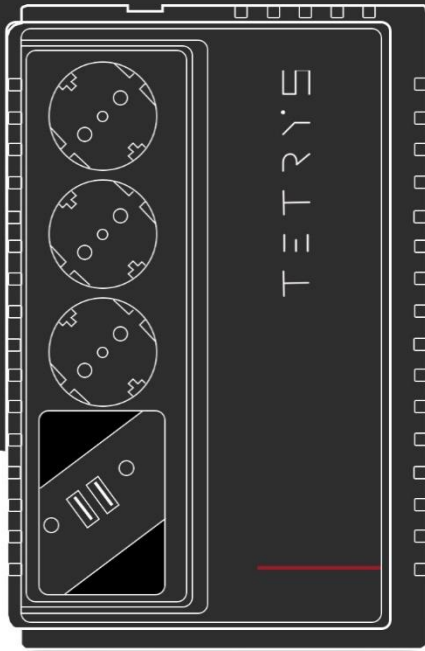


# TETRY'S

LINE INTERACTIVE UPS

650 VA

850 VA



USER MANUAL | ENG - ITA

## INTRODUCTION

Before to start using the UPS please read carefully this manual, so to ensure the best usage and the maximum life duration of the machine. The main features of this Uninterruptible Power Supply (UPS) are listed below:

- ✓ Microprocessor control that guarantees high reliability
- ✓ Built-in enhanced boost & buck AVR
- ✓ DC start function
- ✓ Auto restart during AC recovery
- ✓ Modem and phonenumber surge protection
- ✓ Built-in USB communication port
- ✓ Compact size, light weight

## IMPORTANT SAFETY INSTRUCTIONS

This manual contains important safety instructions. Please read and follow all instructions carefully during installation and operation of the unit. Read this manual thoroughly before attempting to unpack, install, or operate your UPS.

**CAUTION!** To prevent the risk of fire or electric shock, install in a temperature and humidity controlled indoor area free of conductive contaminants. (See the specifications for the acceptable temperature and humidity range.)

**CAUTION!** To reduce the risk of overheating the UPS, do not cover the UPS cooling vents and avoid exposing the unit to direct sunlight or installing the unit near heat emitting appliances such as space heaters or furnaces.

**CAUTION!** Do not attach non-computer-related items, such as medical equipment, life-support equipment, microwave ovens, or vacuum cleaners to UPS.

**CAUTION!** Do not plug laser printers, scanners or aquariums into the UPS outlets because of their high start-up current.

**CAUTION!** This UPS is not suitable for devices with Active PFC. Check preventively your power supply typology.

**CAUTION!** Do not allow liquids or any foreign object to enter the UPS. Do not place beverages or any other liquid-containing vessels on or near the unit.

**CAUTION!** Do not plug the UPS input into its own output.

**CAUTION!** Do not attach a power strip or surge suppressor with >1,5m wire to the UPS

**CAUTION!** With the installation of the UPS, it should be prevented that the sum of (UPS and) the connected (load) leakage current exceeds 3.5mA

**CAUTION!** In the event of an emergency, press the OFF button and disconnect the power cord from the AC power supply to properly disable the UPS.

**CAUTION!** In the event of severe and/or prolonged atmospheric events (storms, lightning, etc..) disconnect the UPS from the mains to avoid any damage risk to connected equipment.

**CAUTION!** The socket-outlet shall be installed near the equipment and easily accessible.

**CAUTION!** Internal battery voltage is 12V DC. Sealed, lead-acid, 6 cells battery

**CAUTION!** Do not dispose of batteries in a fire as they may explode

**CAUTION!** A battery can present a risk of electrical shock and high short circuit current. The following precautions should be observed when working on batteries:

- 1) Remove watches, rings, or other metal objects from the hands.
- 2) Use tools with insulated handles.
- 3) Wear rubber gloves and boots.
- 4) Do not lay tools or metal parts on top of batteries.
- 5) Disconnect charging source prior to connecting or disconnecting battery terminal.

**CAUTION!** Servicing of batteries should be performed by personnel knowledgeable of batteries and the required precautions. Keep unauthorized personnel away from batteries.

**CAUTION!** When replacing batteries, replace with the same number of the sealed lead-acid batteries.

**CAUTION!** Unplug the UPS prior to cleaning and do not use liquid or spray detergent.

**CAUTION!** This UPS utilizes voltages that may be hazardous. Do not attempt to disassemble the unit. The unit contains no user replaceable parts. Only authorized service personnel may perform repairs.

**CAUTION!** Do not stick fingers into sockets.

**CAUTION!** The UPS cannot be transported by plane because it contains lead acid batteries.

## POSITIONING

Please follow the instructions to correctly position your UPS:

1. The UPS can be placed on a horizontal surface or installed to a wall. For wall installation use a fastener (not included) that can support at least 10 kg (see specific paragraph "Wall Installation").
2. This UPS is projected for indoor use.
3. The UPS must not be exposed to direct sunlight or any heat source.
4. The air temperature must be between 0°C and 40° C (25°C is the ideal temperature).
5. Ambient humidity must be less than 90%.
6. The UPS must not be placed on dusty environments.
7. The UPS must be placed at least 15 cm. far from walls to ensure enough ventilation.
8. Do not obstruct or pour any liquid on ventilation holes.
9. Do not cover the UPS with any object.
10. Keep away liquids, flammable gases or corrosive substances.

## INSTALLING YOUR UPS SYSTEM

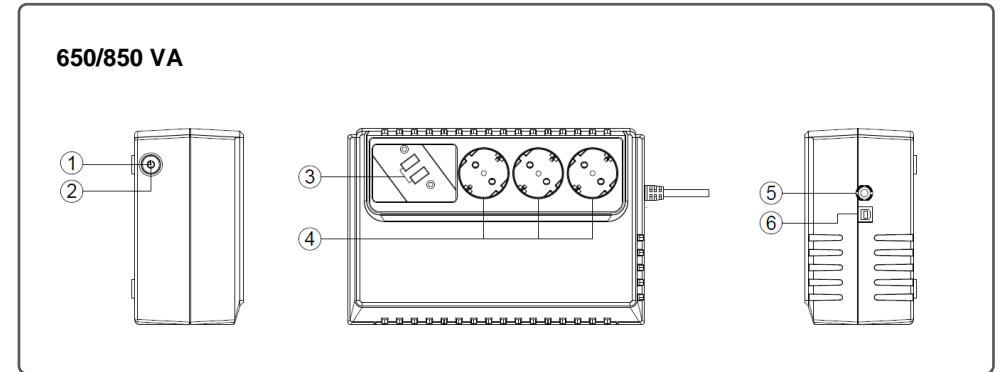
### UNPACKING

The box should contain the following: UPS Unit x1, USB cable x1.

### HARDWARE INSTALLATION GUIDE

1. The UPS may be used immediately upon receipt. However, recharging battery for at least 8 hours is recommended to ensure that the battery's max charge capacity is achieved. Charge loss may occur during shipping or storage. To recharge the battery, simply leave the unit plugged into an AC outlet: it will charge in both the on and off position.
2. With the UPS unit off and unplugged, connect the computer, monitor, and any externally powered data storage device (Zip drive, Jazz drive, Tape drive, etc.) into the battery power supplied outlets. DO NOT plug a laser printer, copier, space heater, vacuum, paper shredder or other large electrical device into the battery power supplied outlets. The power demands of these devices will overload and possibly damage the unit.
3. Plug the UPS into a 2 pole, 3 wire grounded receptacle (wall outlet). Make sure the wall branch outlet is protected by a fuse or circuit breaker and does not service equipment with large electrical demands (e.g. air conditioner, refrigerator, copier, etc). Avoid using extension cords.
4. Press the power switch to turn the unit on. The power on indicator light will illuminate and the unit will "beep".
5. If an overload is detected, an audible alarm will sound and the unit will emit one long beep. To correct this, turn the UPS off and unplug at least one piece of equipment from the battery power supplied outlets. Wait 10 seconds. Make sure the circuit breaker/fuse is normal and then turn the UPS on.
6. To maintain optimal battery charge, leave the UPS plugged into an AC outlet at all times, in compliance with all safety conditions.
7. To store your UPS for an extended period, cover it and store with the battery fully charged. Recharge the battery every three months to ensure battery life.

## BASIC FUNCTIONALITIES



### 1. On/Off Button

To turn ON/OFF the UPS keep pressed the button for 2 seconds. Release the button after you hear an acoustic signal and a "click". A white light around the button will confirm you that the UPS is switched ON.

### 2. Power On Led Indicators

This LED is illuminated when the UPS is working.

### 3. USB chargers

Support 2 devices charging at the same time, up to 2.4A total power.

### 4. Battery Backup Outlets

Provide battery backup and surge protection. They ensure power is provided to connected equipment over a period of time during a power failure.

### 5. Input Power Cord

Connect to utility power.

### 6. USB COMM. Port

This port allows connection to the USB port on the computer, so to get access to remote monitoring and shutdown operations through the UPS management software

## WALL INSTALLATION

The UPS can be installed to a wall (horizontally only).

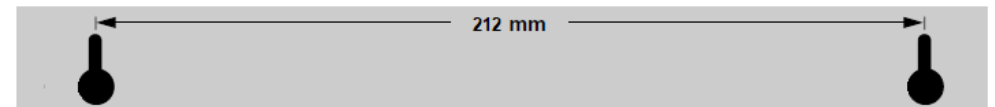
To install the UPS use fasteners (not included): insert them into the wall at a distance of 212 mm. and let the head getting out of the wall by 8 mm. Then secure the UPS by inserting the apposite holes into the fasteners' heads. The fasteners must support at least a 10,0 kg weight.

### Reccomended configuration:

Self-tapping screw 4,5 x 40 mm.

Rawplug 6 x 30 mm.

Hole 8 mm. diameter



## DEFINITIONS FOR ILLUMINATED LED INDICATORS

LED	Alarm	Condition
On	Off	Normal
Flash	Beep 1 time In Every 30 Seconds	Utility Failure -The UPS is providing battery power to outlets.
Flash	Beep 1 time In Every 2 Seconds	Utility Failure -The UPS is providing battery power. The rapid beeps indicate the battery will run out of power shortly.
Flash	Beep 1 time In Every 0.5 Second	Overload - Occurs when connected equipment exceeds the rating of the unit. Turn the UPS off and unplug at least one piece of equipment from the UPS.

## TECHNICAL SPECIFICATIONS

Model	650VA	850VA
Capacity (VA/W)	650/360	850/480
<b>Input</b>		
Nominal Voltage	230VAC	
Nominal Frequency	50/60Hz	
<b>Output</b>		
On Battery Output Voltage	220-240VAC	
On Battery Output Frequency	50 Hz+/-1%	
Overload Protection	Fuse	
Wave form	Simulated sine wave	
<b>Physical</b>		
Dimensions WxHxD (mm)	91.5x159x240	
Weight	4.2kg	4.5kg
<b>Battery</b>		
Sealed Maintenance Free Lead Acid Battery	1x 12V/5Ah	1x 12V/5.6Ah
Typical Recharge Time	8 Hours	
<b>Warning Diagnostics</b>		
Indicators	Power On	
Audible Alarms	On Battery, Low Battery, Overload, Fault	
<b>Environmental</b>		
Operating Temperature	0°C to 40°C	
Operating Relative Humidity	0 to 90%	
<b>Management</b>		
Auto-Charger	Yes	
Auto-Restart	Yes	
USB COMM.Port	Yes	

## TROUBLE SHOOTING

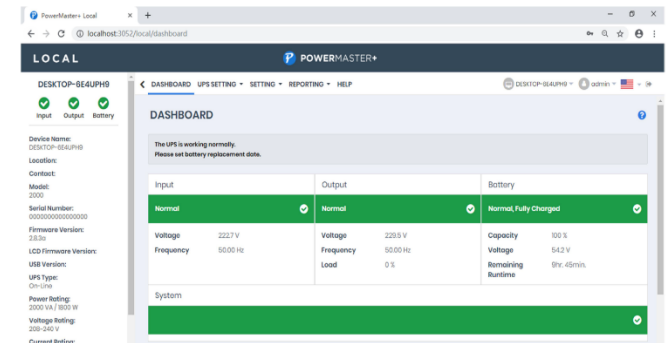
Problem	Possible Cause	Solution
The UPS does not perform expected runtime.	Batteries are not fully charged.	Recharge the battery by leaving the UPS plugged in.
	Battery is slightly worn out.	Contact Technical Support for battery replacing.
The UPS will not turn on.	The on/off switch is designed to prevent damage by rapidly turning it off and on	Turn the UPS off. Wait 10 seconds and then turn the UPS on
	The unit is not connected to an AC outlet.	The unit must be connected to a 220-240V outlet.
	The battery is worn out.	Contact Technical Support for battery replacing.
	Mechanical problem.	Contact Technical Support.
Outlets do not provide power to equipment	Batteries are discharged	Allow the unit to recharge for at least 4 hours.
Power Guide Management Software is inactive	The USB/serial cable is not connected	Connect the USB/serial cable to the UPS unit and an open USB/serial port on the back of the computer. You must use the cable that came with the unit.
	The UPS is not providing battery power	Shutdown your computer and turn the UPS off. Wait 10 seconds and turn the UPS back on. This should reset the unit

## MANAGEMENT SOFTWARE DOWNLOAD

The management software provides a user-friendly interface for your power systems. The graphic interface is intuitive and displays essential power informations at a glance.

### Installation procedure:

- Download Power Master software from the internet website: [www.juststepyc.com](http://www.juststepyc.com)
- Double-click the file and follow the installation steps.
- To access Power Master double-click on the software icon or enter <http://localhost:3052> address on your web browser.



## MAINTENANCE

### Before starting any cleaning operation, be sure that:

- The AC Input Voltage for the UPS has been removed.
- The UPS is OFF.

Use a cloth moistened only with water to externally clean the UPS. Before restarting the UPS be sure it is completely dry.

If the UPS works in an environmental unusually dusty or dirty, remove the dirty from the ventilation holes

If any liquid gets inside the UPS, do not start the unit and contact Technical Service immediately.

## SUPPORT

If the UPS has been damaged during delivery, please report it to the transporter.

If the UPS requires repairs check the trouble shooting table.

If the problem persists contact our technical support at [www.justepyc.com](http://www.justepyc.com)

Opening, repairing, or replacing parts inside the UPS must always be carried out by specialized technical personnel only, otherwise warranty has to be considered forfeited.

## WARRANTY

The standard warranty for Epyc UPS's is 24 months from the date of purchase.

Epyc's standard procedure is to repair the UPS, or to replace the original unit with a factory reconditioned unit.

The warranty period is 12 months from the date of purchase for all parts subject to wear and tear (such as batteries and fuses).

Please visit [www.justepyc.com](http://www.justepyc.com) for further details about warranty conditions.

## ENVIRONMENTAL PROTECTION

Epyc's packagings are made by recyclable materials, in compliance with company environmental policy.

For proper disposal please separate the different packaging materials as listed on the table below.

Then dispose all materials according to your Country specific regulations.

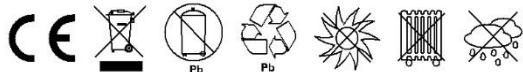
Component	Material	Recycling code
Box	Cardboard	PAP 20
Angular packaging	Expandend polystyrene	PS 6
Protective bags	Polyethylene	HDPE 2

### Disposal

The UPS contains circuit boards and batteries, that are considered toxic waste and dangerous.

At the end of its life the UPS must be disposed in compliance to WEEE current regulations (Waste of Electric and Electronic Equipment). Check [www.justepyc.com](http://www.justepyc.com) for more details.

Proper disposal helps to protect the environment.



K01-C000506-00 TS04

All rights reserved. Reproduction without permission is prohibited.



[www.justepyc.com](http://www.justepyc.com)